

Decade of
DREAMS SUPER
SATURDAY

NOVEMBER 6, 2021

aguafria.org/decadeofdreams

A word cloud on a dark blue background featuring various concepts related to innovation and community. The words are arranged in a non-uniform, overlapping manner. The largest words are 'INNOVATION' and 'COMMUNITY', both in white. Other prominent words include 'OPPORTUNITY', 'POSSIBILITY', 'TEAMWORK', 'FUTURE', 'BALANCE', 'DREAMS', 'LEADERSHIP', 'INTEGRITY', 'GROWTH', 'ACTION', 'EQUITY', 'BARRIER ELIMINATION', 'ACCOUNTABILITY', 'FOUNDATION', 'PRIORITY', 'FRAMEWORK', 'IMAGINATION', 'PARTNERSHIPS', 'DIVERSITY', 'DETERMINATION', and 'SUSTAINABILITY'. The words are in different sizes and orientations, creating a dynamic visual effect.

INNOVATION

COMMUNITY

OPPORTUNITY

POSSIBILITY

TEAMWORK

FUTURE

BALANCE

DREAMS

LEADERSHIP

INTEGRITY

GROWTH

ACTION

EQUITY

BARRIER ELIMINATION

ACCOUNTABILITY

FOUNDATION

PRIORITY

FRAMEWORK

IMAGINATION

PARTNERSHIPS

DIVERSITY

DETERMINATION

SUSTAINABILITY



Dear Agua Fria Community:

This is our time. As we build our Decade of Dreams we can either seize the opportunity and build something great together or we can miss this moment. Let's build the best high school district in the country - right here, right now.

--Mark
Superintendent Yslas

#MakeItHappen

AGENDA

8:00-9:00	Sign-in & Breakfast
9:00-9:45	Opening Session
10:00-10:40	Session 1
10:50-11:30	Session 2
11:30-12:30	Lunch
12:30-1:10	Session 3
1:20-2:00	Session 4

TABLE OF CONTENTS

PAGE	CONTENT
2	City of Buckeye
3	City of Goodyear
4-5	Data Gathered from Superintendent Search
6-8	Growth & Opportunity Session Materials
9-11	Teaching & Learning Session Materials
12-13	Whole Child Session Materials
14-15	Strategic Alliance Session Materials
16-17	Dream Team Members & Stats
18	District Boundaries Map
19-24	Local Business Partners
25	Venue (Verrado HS) Map



20 YEARS OF FUTURE GROWTH

Buckeye's entitled land can support an ultimate buildout population of over 1.5 million, which would make it the second most populous city in Arizona after the City of Phoenix.

104,000+
2021

186,600
2030

+11.7%
Annual
Growth Rate

305,400
2040

+6.7%
Annual
Growth Rate



1.5 Million
Buildout

DEMOGRAPHICS



\$104,000
Avg. HHI



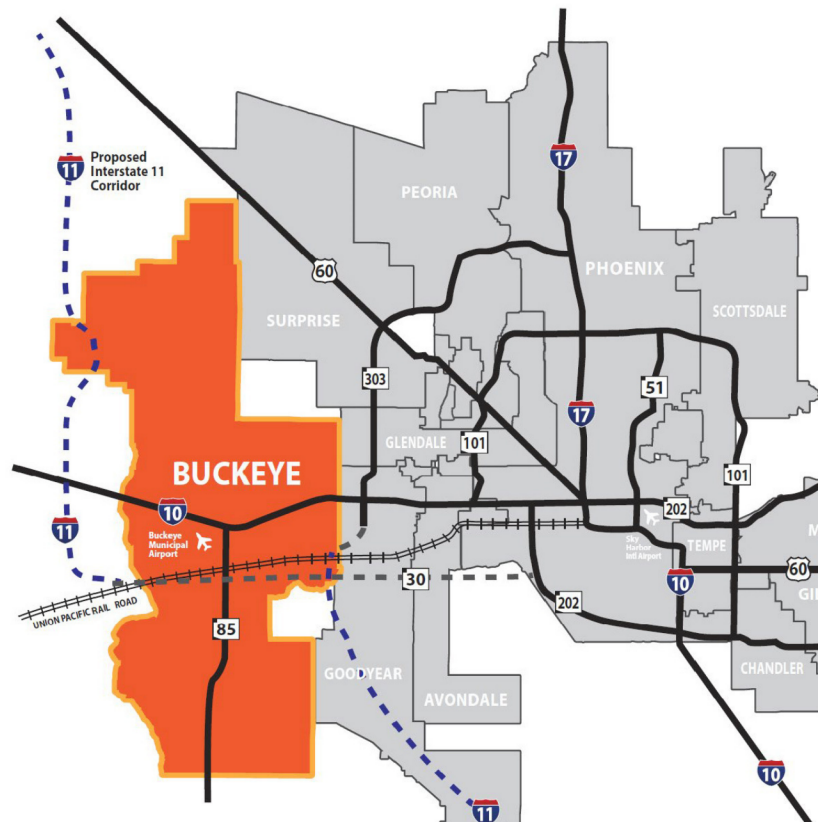
33 yrs
Median Age



\$344,000
Avg. Home
Value

TRAINING PROGRAM PARTNERS

- West-Mec Southwest Campus
- Estrella Mountain Community College
- ASP Energy Education Center



GET CONNECTED

WITH GOODYEAR ECONOMIC DEVELOPMENT



Visit our city of Goodyear Economic Development website
www.developgoodyearaz.com



What's That? Find out on our Development Map
www.developgoodyearaz.com/get-connected/development-map



For business announcements visit our Biz Buzz page
www.developgoodyearaz.com/get-connected/biz-buzz



Follow, Like, and Retweet our posts on Twitter
[@GoodyearAZecdev](https://twitter.com/GoodyearAZecdev)



Follow, Like, and Share our posts on LinkedIn
City of Goodyear Business News



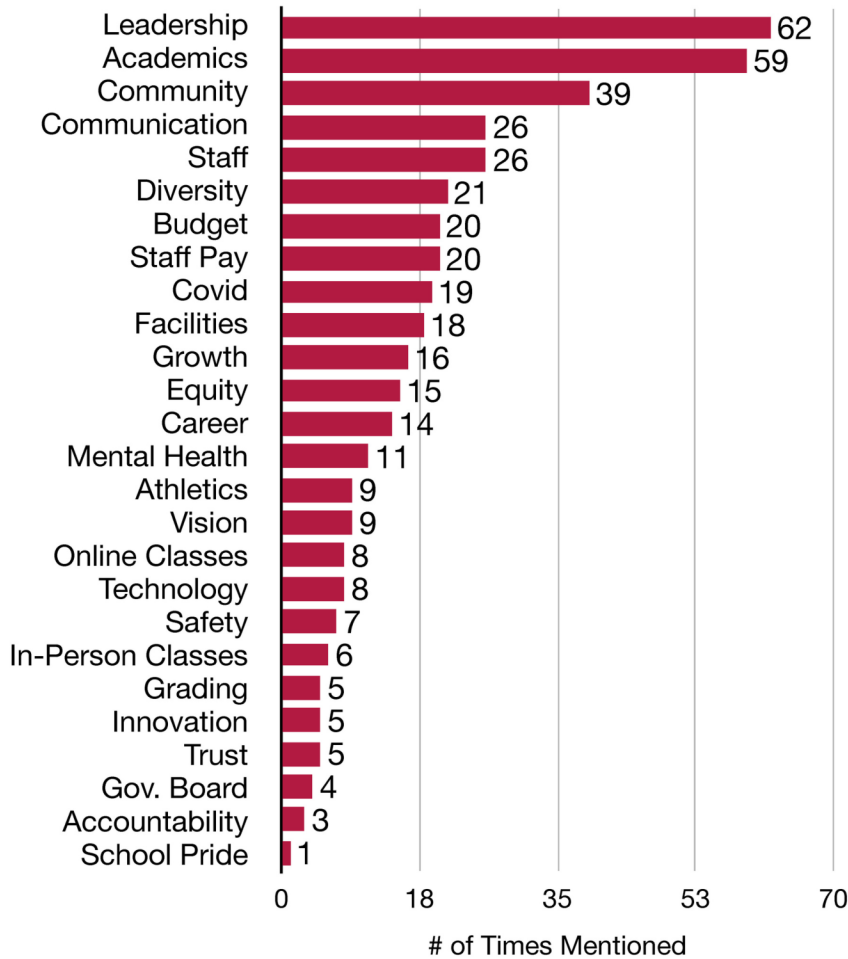
CITY OF
Goodyear | **ECONOMIC**
Arizona **DEVELOPMENT**

City of Goodyear Economic Development | 14455 W Van Buren St, D102, Goodyear, AZ 85338
623-932-3025 | gynecdev@goodyearaz.gov

SUPER SATURDAY

November 6, 2021

Topics Mentioned in Superintendent Search

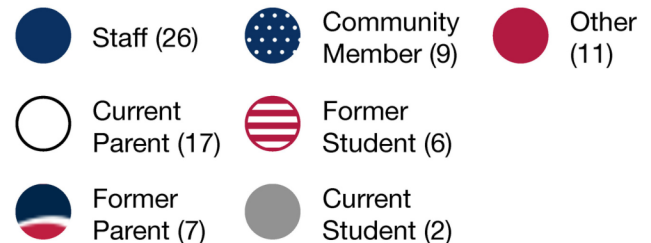
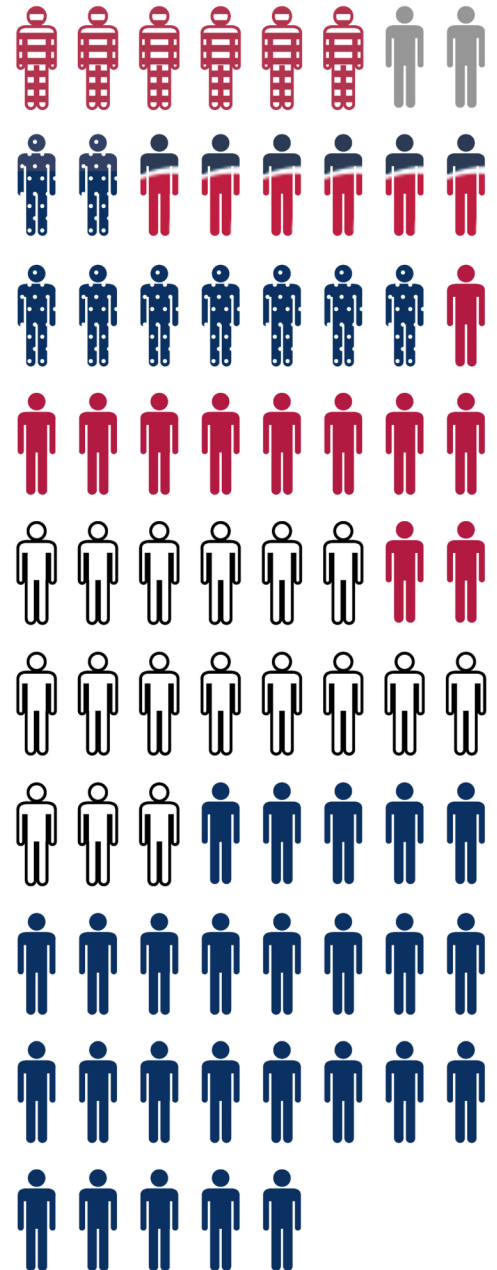


A Note on COVID

Although some of the comments reference a specific situation related to the COVID pandemic, they can also reveal what is important during challenging times in general. For instance, a comment that mentions the importance of decisive decision making during covid may highlight the importance of leadership in other difficult situations.



Who Shared



THE QUESTIONS

1. Please list the top three accomplishments of the Agua Fria Union High School District.
2. Please list the top three challenges that the next Superintendent must prioritize.
3. Is there anything else you wish to add as the Agua Fria UHSD Governing Board seeks your input with regard to the Superintendent profile?

A NOTE

Although some of the challenges have already been met (like hiring a new superintendent), the responses to questions can still give a picture of the values we share as a community. For example, vision and communication.



Accomplishment:

“Prioritizing both college and career, and setting that high expectation of students from the top of our district leadership.”

Challenge:

“Teacher and sub shortages”

Superintendent input:

“We need a superintendent that is a leader with clear vision and goals.”



See all responses

Decade of
DREAMS

Agua Fria UHSD
@MulaShippin

GROWTH & OPPORTUNITY

Tom Huffman, Deputy Superintendent of Operations

District **School Info**

Per the Arizona School Facilities Board

Agua Fria High School

Year Opened

1955

Square Footage

254,058

Canyon View High School

Year Opened

2018

Square Footage

240,198

Desert Edge High School

Year Opened

2002

Square Footage

227,164

Millennium High School

Year Opened

1979*

Square Footage

258,394

Verrado High School

Year Opened

2006

Square Footage

233,958

District

Enrollment

History

<i><u>School Year</u></i>	<i><u>Enrollment</u></i>	<i><u>Gain</u></i>
2011-2012	6129	-
2012-2013	6677	548
2013-2014	6973	296
2014-2015	7240	267
2015-2016	7301	61
2016-2017	7624	323
2017-2018	7710	86
2018-2019	7830	120
2019-2020	8260	430
2020-2021	8459	199
2021-2022	9276	817

GROWTH & OPPORTUNITY

Enrollment has increased each year for 20+ years, with this year being a record level. We will discuss our hopes, dreams, and ideas on how to best manage and take advantage of the opportunities presented. The 21 by 31 initiative is geared to maximize learning opportunities for all.

DREAMS

BARRIERS

PRIORITIES

**MORE TO ADD?
SCAN HERE TO SHARE
YOUR THOUGHTS!**

<https://rebrand.ly/SupSatfeedback>





ACADEMIC SERVICES

Key Programs

- AP & Honors Options
- Gifted & Talented
- Exceptional Student Services
- Academic Intervention and Support
- English Acquisition Programs
- AVID
- Yearbook
- Student Advisory Programs
- Student Government



AGUA FRIA HIGH SCHOOL

- Air Force- Jr. ROTC
- Film & TV
- Psychology
- Law & Public Safety
- Coding/Computer Programming
- Construction
- Early Childhood Education
- Graphic Design
- Marketing
- Sports Medicine



CANYON VIEW HIGH SCHOOL

- AgricScience
- Coding/Computer Programming
- Film & TV Production
- Graphic Design
- Marketing
- Medical Assisting Services
- Sports Medicine



ACADEMIC SERVICES

Key Programs



DESERT EDGE HIGH SCHOOL

- AgriScience
- Film & TV Production
- Graphic Design
- Interior Design
- Marketing
- Sports Medicine



VERRADO HIGH SCHOOL

- Coding/Computer Programming
- Digital Photo
- Engineering
- Film & TV Production
- Graphic Design
- Marketing
- Sports Medicine



MILLENNIUM HIGH SCHOOL

- International Baccalaureate
- Baking & Pastry
- Culinary Arts
- Digital Photo
- Early Childhood Education
- Film & TV Production
- Graphic Design
- Marketing
- Sports Medicine



AGUA FRIA ONLINE

- Our newest school with 200 students currently enrolled!
- A completely online school that is designed to meet the community's needs.
- Students may enroll in AFO a semester at a time, and maintain alignment to their 4-year academic plan.

TEACHING & LEARNING

The AFUHSD is comprised of 5 comprehensive high schools, 2 alternative delivery programs, and an online platform. This session is an opportunity to provide feedback relative to academic programs, pedagogy, curriculum, and educational technology.

PRIORITIES

DREAMS

**MORE TO ADD?
SCAN HERE TO SHARE
YOUR THOUGHTS!**

<https://rebrand.ly/SupSatfeedback>



BARRIERS

Whole Child

The Agua Fria UHSD provides a variety of services and opportunities to meet the needs of the “whole child.”

Cognitive Examples

Exceptional Student Services (Special Education), International Baccalaureate Curriculum, Science Fair, and various clubs supporting cognitive interests.

Social Examples

Each site sponsors a variety of clubs that meet the interests of our diverse student population. Examples include; Black Student Union, SAFE club, Anime, Theater, and Choir. Students also have the opportunity to participate in service clubs such as the Key Club.

Emotional Examples

Each school employs two student support specialists with a focus of building relationships in a proactive manner and connecting students to appropriate resources. Each school employs one social worker available to meet with students and families on various issues to include emotional support and resource support. The counselor's role also includes social-emotional support for students. The AFUHSD has a partnership with Touchstone Behavioral Health Services to provide school-based services (therapy) to students while on campus. Students are referred through our counselors and social workers.

Physical Examples

Many of our students are involved in extracurricular activities. This includes athletics, band, and theater. Course electives include weight training, Sport and PE, and Dance.

WHOLE CHILD

The whole child approach considers all areas of cognitive, social, emotional, and physical wellness. It gives children the foundation they need to become well rounded, healthy individuals, equipped with a solid education and important life skills to help them reach their full potential.

PRIORITIES

DREAMS

**MORE TO ADD?
SCAN HERE TO SHARE
YOUR THOUGHTS!**

<https://rebrand.ly/SupSatfeedback>



BARRIERS

Strategic Alliances

Megan Griego
Executive Director,
Communications &
Strategic Alliances

Strong community connections have been instrumental in helping build a stellar educational experience for students at Agua Fria Union High School District.

- Due to our partnerships with local colleges, last school year 878 students passed a dual-enrollment course and earned college credit.
- Our relationships with local businesses currently provide 70 internships, giving students the experience and skills needed for their future careers.
- Thanks to the Rosztoczy Foundation College Promise, 39 AFUHSD graduates received a full-ride scholarship to any Arizona university, college, or trade school.



STRATEGIC ALLIANCES

As the southwest valley continues to grow, it is important for the District to expand its partnerships with public entities, private businesses, faith-based organizations, non-profits, etc. During this session, attendees will identify needs and partnerships to help bridge students from the classroom to college and careers.

PRIORITIES

DREAMS

MORE TO ADD?
SCAN HERE TO SHARE
YOUR THOUGHTS!

<https://rebrand.ly/SupSatfeedback>



BARRIERS

A HUGE THANKS TO ALL THE MEMBERS OF THE AGUA FRIA USHD DREAM TEAM!

CHRYSTE BERDA
ANGEL ABARCA-RUIZ
CASSANDRA ADAMS
BELIA AGUIRRE
IRLANDA AGUIRRE
AIDA ALICKOVIC
LUKE ALLPRESS
ELENA ARMBRUST
ESMERALDA AROZ
NATALIE ARROYO
PAULA AUBLE
MARCY BACA
BRYCE BARINGER
MARIA BARTON
ZAMIR BATTLES
CORY BEAL
VERNON BEARD
DEBORAH BEARD
JAMAL BECHRI
PATRICK BECKER
ROSALIA BERUMEN
MARC BJORK
EMMANUEL BLANCO
MOLLY BOLICH
QUAY BOLTON-
LATTARI
SCOTT BOTT
LEISA BOYD
BECKY BREITWIESER
NICHOLE BUNDY
CORINA BUTIEREZ
TIM BUTLER
MICAELLA
BUTTERFIELD
JANAE BYRD
AARON BYRUM
NOEMI CABRALES
BEVERLY CARR
KIA CASTILLO
ALEJANDRA CEJA
APRIL CEPEDA
DANIELLE CLYMER
LISA COBB
JENNIFER COLE
ROGER COLEHOWER
EMILY COLEHOWER
MELANIE COLIN
CHRIS CONTRERAS
GRANT CONWAY
KATIE COURTER
MICHAEL CRAMER
ERIC CULTUM
DANIELLE DANIELAK-
MOEHR
AUTUMN DANIELS
BIANCA DE MARCO
TRACEY DEBUFF
GINA DECOSTE
LATOYA DEJESUS
STACY DOBBINS
TAMMY DOERKSEN
TRACY DUNCAN
MONICA ELZY
CARLOS ELZY
CARLOS ELZY
DAN ENSIGN
KATHY ESTES
FIDEL ESTRADA
RONDA EVERETT
ERIK FAVREAU

PAM FERGUSON
ZAMMEL FERNANDEZ
MICHAEL FINNEGAN
KENDALL FLEMING
DANIELLE FLETCHER
MARIA FLETCHER
DEANN FRANKLIN
TONY GARDNER
CAYLA GASSAWAY
LATRICE GETTINGS
TERESA GILES
DONALD GODBOLD
EFFIE GODBOLD
CARL GOIN
KRISTEE GOMEZ
MELANIE GONZALEZ
JOEY GORNIK
TYLER GREENE
KELLY GREENWELL
SEAN GREENWELL
TAMEE GRESSETT
MEGAN GRIEGO
RACHEL GROSS
DANIEL GRUMBLING
JARETT GUY
NEAL HALLIHAN
GRETCHEN HANN
CASTONIA HARDGE
FLER HART
CARISSA HARVEY
LAUREN HERNANDEZ
SAMANTHA HIERRO
RICARDO HIGUERA
MAXINE HILL
STACY HINK
PAUL HOEPRICH
ANDREA HUDSON
TOM HUFFMAN
FRANCES INESTROZA
EMILY IRVINE
SARA IRVINE
ELIZABETH (BETH)
JACKSON
EDDIE JAMES
JEANIE JAMES
ANGELA JEFFREYS
KRISTIN JENNINGS
WILLIAM JOHNSTON
JULIE JONES
JOSH JOVANELLY
TONI KEE
RENEE KEELE
JASON KEELE
JAMES KEELE
ROSIE KEEPSAKE
TROPHY
LINDA KENNEDY
LINDA KESSELMAN
HANNOON KUNST
MATT LEES
TIFFANY LENGUYEN
DREW LEWIS
MICHAEL LILLIS
LILLIAN LINN
ANNE LIU
PAULA LIVINGSTON
LILY LOGID
PAOLA LOPEZ
SASHA LYSY

GARRETT MAIER
DOUGLAS MARTIN
GRACE MCBRIDE
ERIN MCKEE
CLARISSA MENDOZA
ADAM MENDOZA
TIM MESKELL
CYNTHIA MESSIEHA
RHIANNON MIETT
AMANDA MILLER
DARRIN MITCHELL
BROOKLYN MITCHELL
RANDI MITCHELL
JEFFREY MOEHR
ERNEST MOLINA
STEPHANIE MONTES
TARA MONTGOMERY
YESENIA MORENO
AIESHA MORRIS
STEPHANI MORSS
CHERIE NOLAN
SIERRA NOLAN
PHILLIP NOWLIN
ERIN O'SHAUGHNESSY
JUAN OJEDA
DELSEY OLDS
KATELYN ORLOSKI
SARA ORTIZ
LAUREN OWENS
HILARY PALMGREN
MIKE PEARSON
CLAUDINE PEASE-
WINGENTER
CHELSEA PENNE
TAYLOR PERKINS
STELLA PETERS
LISA POWERS-VAYDA
JENNIFER PRIDY
KATHRYN PRUSINSKI
FRED QUARLES
ALLISON RAI
PRISCILLA RAMIREZ
LYN REID
TRACY REXROAT
BRYAN RICHMAN
BRYAN RICKARD
KRISTI RIEMER
MIKE RILEY
LISA RINCON
CODY RITCHISON
KIMBERLY ROBERTS
RAVEN ROBERTS
KRISTINA ROGERS
KENNETH ROMITO
BENJAMIN RONQUILLO
JEREMY ROSE
RACHEL ROUX
DENISE ROYAL
IDENNA RUSSELL
SONIA SAENZ
ANDRINA SALCIDO
ISABELLA SALOMONRACHEL
SANCHEZ
CHRISTY SARTIANO
AURORA SARTIANO
SHELLE SCHLOSSER
DAVID SCHMIDT
ZOE SCHREY
KENDRA SCHROEDER

COURTNEY SCHUH
CYNTHIA SCHWARTZ
APRIL SCIBIENSKI
KAITLYN SECOR
JEFF SEEKER
EVA SHAW
MIKE SHEPARD
ISAAH SHEPPARD
NATE SHOWMAN
TYLER SHUPE
KRISTY SIEGEL
CASSIDY SIEGEL
MANUEL II SILFAVAN
MANUEL III SILFAVAN
CHARNIELYN SILFAVAN
SHOLANDA SMITH
SEAN SMITH
SCOTT SMITH
DONOYA SMITH
CYNTHIA SOE MYINT
MICHAEL SOE MYINT
AMY SPIWAK
KALEAH STEELE
SKYLAR STEPHENS
TODD STEVENS
ESTER STEVENS
FRED STEVENS
PAUL STUCKY
JOHN STULL
NICOLE SWEER
RON TALLEY
TREY TERRY
ANTHONY THOMAS
JILL THOMAS
RACHEL THOMAS
DANELLE TREGUBOFF
GEN TURNBULL
SAMANTHA TWEEDIE
NICO VALDEZ
JOSE VALDIVIA
CHRISTIAN VALLE
JOSE LUIS VALLE-LOPEZ
MARIE VARGAS
CLAUDIA VARGAS
MARCOS VARGAS
RYAN VAUGHN
ARACELY VILLEGAS
MARLON VILLEGAS
GASTELUM
MAX VILLEGAS- GASTELUM
TAHLYA VISINTAINER
JOEL WAKEFIELD
ROSA WARD
REBECCA WARNER
MATTHEW WATSON
MELINDA WEBER
MADISON WEBER
CLAUDIA WEISS
BRIAN WELLS
JOE WERNER
ELAYNE WHEATLE
GINA WILKERSON
MARIA WILLIS
ANNE WISNER
RUTHANNE WISNIEWSKI
JESSICA WORTHINGTON
MELISSA YAPO
MARK YSLAS
KAREN ZAMORA

I am truly grateful to see how many people are willing to invest their time, experience, and energy into making our district the very best. Thank you for being a part of our Dream Team. Together we can #MakeItHappen.

Rachel Gross

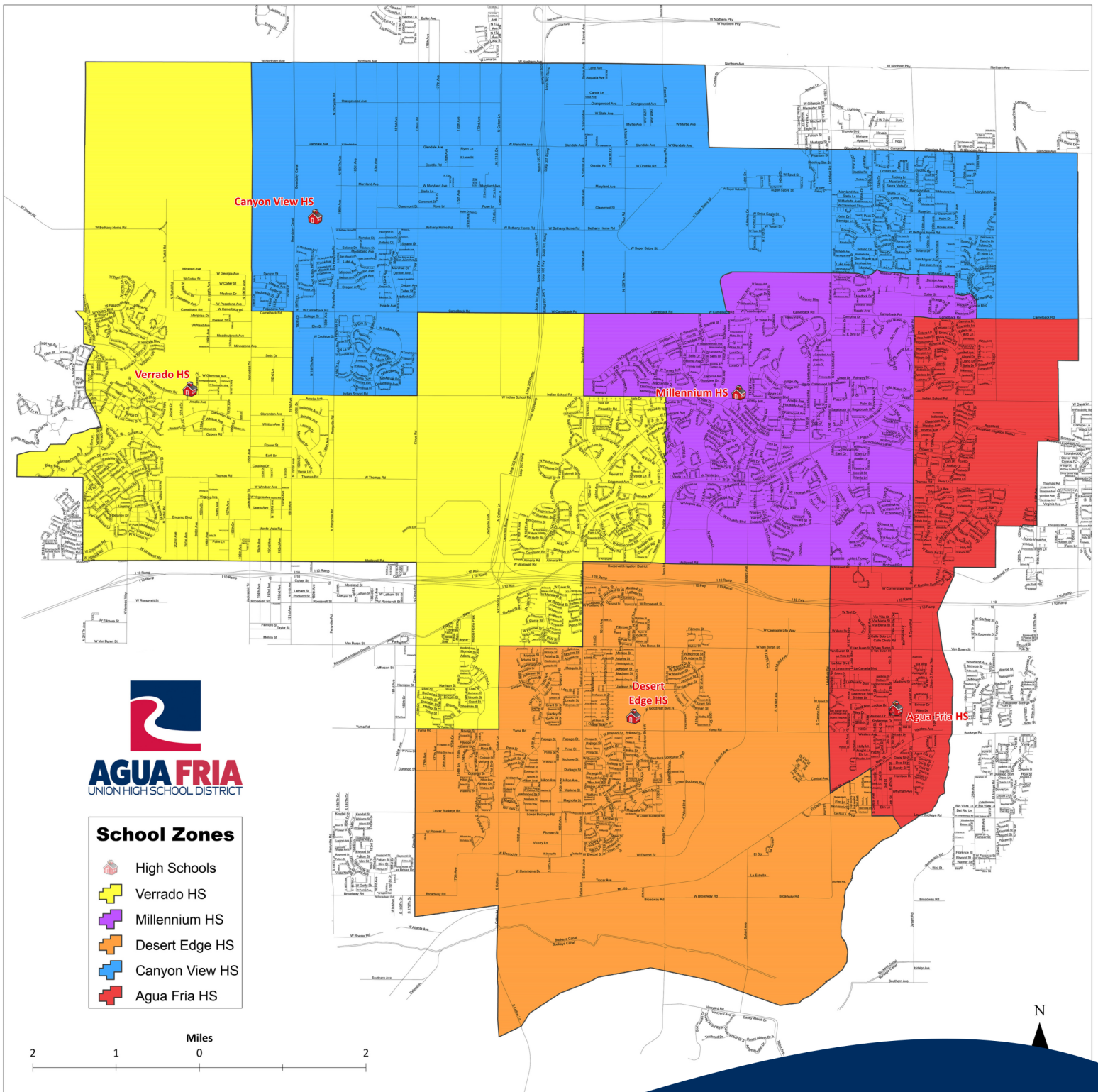
Chief of Staff



DREAM TEAM STATISTICS

COMMUNITY MEMBERS	13%
FAITH-BASED ORGANIZATION	1%
FEEDER SCHOOLS	2%
GOVERNMENT ENTITY	2%
LARGE CORPORATION	1%
PARENTS	22%
SMALL BUSINESSES	3%
STAFF	45%
STUDENT	11%

District Boundaries Map



Thank you AFUHSD CTE

for sponsoring today's breakfast
from Amici Catering.



www.amici.catering

PROGRAMS

AgriScience
Air Force ROTC
Architecture Interior Design
Baking & Pastry
Business Management
Computer Programming
Construction
Culinary Arts
Digital Photography
Early Childhood Education
Engineering
Film & TV Production
Graphic Design
Internships
Law & Public Safety
Marketing
Medical Assistant
Sports Medicine

WHAT IS CTE?

Career and Technical Education (CTE) programs specialize in modern technologies, skilled trades, applied sciences and career readiness that prepare students for a wide range of high-wage, high-skill, high-demand careers. CTE gives scholars a competitive advantage by teaching technical, academic, employability and professional skills ideal for career and college success. CTE programs also provide opportunities to gain job experiences that help define career paths, identify an appropriate course of study and help pay for tuition.

17 PROGRAMS

60 COURSES

**"Over 90% of graduates who earn
2-3 CTE credits enroll in college
and make higher wages."**

**The Top 10 Hardest-To-Fill Jobs
Include Skilled Trade Workers**

Many High-Demand Jobs

that require education and training beyond high school, but less than a bachelor's degree, are a significant part of the economy

WWW.AGUAFRIA.ORG/CTE

For detailed information on
CTE programs and courses
visit our website or scan
the QR code.



*Today's lunch is
catered by...*



Thank you **CHASSE Building Team** for sponsoring today's lunch.

CHASSE Building Team is an award-winning general contractor that oversees more than \$250 million in construction projects annually, all of which are in Arizona. Their focuses are education, nonprofits, retail, multi-family housing, and industrial spaces.



Learn more at www.chasse.us

Partnerships

The work we do as a school district is not exclusive to the families and students we serve. Everyone is welcome to become part of the success of Agua Fria UHSD, including retirees, elementary districts and charter schools, faith-based organizations, small businesses, large companies and government entities. Thank you to our many partners who are participating in Super Saturday.



ARIZONA STATE UNIVERSITY

Arizona PBS is a community service of Arizona State University.

www.azpbs.org

AZ Registry Information

info@thearizonaregistry.org | Fax: 602-297-6590 | Phone: 855-818-6613

www.azregistry.org | www.azearlychildhood.org

CHASSE

BUILDING TEAM

Lori Harlig
CEO/Chief Event Officer

amici
catering



eat@amici.catering
office 602.866.1604
www.amici.catering

fresh

FITNESS KITCHEN

RONDA EVERETT

Independent Consultant
623 277-0854

www.rondaeverett.norwex.biz

*Easy*Effective*Safe Solutions



*Radically Reducing Harsh Chemicals
... Improving Quality of Life*

Norwex®

REALTYONEGROUP

RONDA EVERETT

Real Estate Professional
623 277-0854

rondaeverett.myrealtyonegroup.com



Ronda Realty
MAKING DREAMS REALITY

REALTOR®

Making HOME Dreams Reality

... Professional, Positive, Attentive Service

Start your home search today:

TXT "Onerondaeverett" to 866-764-6490



Portillo's®

BEEF • BURGERS • SALADS

Avondale, Arizona

10331 West McDowell Rd

Avondale AZ 85392

480-569-1880



**KINGDOM COME
DEVELOPERS GLOBAL
MINISTRIES**

kingdomcdgministries.org/



SMH ORGANIC
Family Farms

SMHFarms.com



Contact Us:

602.956.0400
info@theopportunitytree.org

theopportunitytree.org

Phoenix

3146 E Windsor Ave
Phoenix, AZ 85008

Casa Grande

209 W First St
Casa Grande, Arizona 85122

Maricopa

19756 N Maricopa Rd #108
Maricopa, Arizona 85139

Avondale!

328 W Western Ave
Avondale, Arizona 85323



How You Can Help

Your donations will assist us in exceeding basic programming and expectations! As an Arizona resident you are able to contribute up to \$400 (\$800 if filing jointly) and may be able to claim a credit against your state income tax liability. Visit our website to learn more about how YOU can help us provide additional opportunities for our Members.

- Adult Day Programs
- Employment Services
- Community Living
- Youth Transitions Program



Providing quality, individualized supports to people with intellectual or developmental disabilities in dynamic and innovative environments - since 1963.

The Tree Fort offers an engaging, high octane, safe, and inclusive after school and summer program for youth! It's **free** for teens receiving DDD services, and **transportation is included!**

Program Format:

Ages 14-22 are welcome
Monday through Friday
School Year: School release until 6pm
Summer & TTE: 9am until 5pm

Activities Include:

- Adaptive Sports and Games
- Creative Arts
- Career Exploration
- Exercise and Movement Classes
- Community Integration

Sign up today, the Tree Fort needs YOU!

For more information and to register, please contact:

Ozzie Cervantes
Youth Services Coordinator
ocervantes@theopportunitytree.org
602.956.0400 ext. 103

Neal Hallihan
Director of Operations and Youth Transitions
nhallihan@theopportunitytree.org
602.956.0400 ext. 206

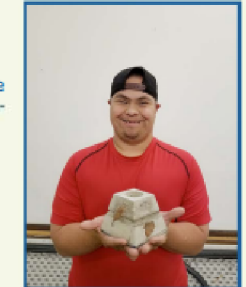


Employment Services

The Opportunity Tree is an Employment First agency - we believe that all people, including those with intellectual and developmental disabilities, are capable and deserving of community employment. With proper support, everyone can participate in today's workforce.

The Opportunity Tree's group supported employment workforce provides more than just the people to get the job done - it provides production, perspective and purpose.

Currently, only 26% of Arizonans with a cognitive disability are employed.



Businesses that collaborate with The Opportunity Tree are creating tangible changes in their communities. We currently hold numerous contracts with local businesses large and small.

The Opportunity Tree has been offering quality supports to people with intellectual and developmental disabilities in Maricopa and Pinal Counties since 1962, and are constantly striving to support progressive integration into the community.

These partnerships create real jobs with real wages that improve poverty rates, character development, and community inclusion.

Inquire today to see how The Opportunity Tree can help you and your business!

For more information on partnering with The Opportunity Tree, please contact:

West Valley
Raylah Pillar
rpillar@theopportunitytree.org

Phoenix, Casa Grande or Maricopa
Tim Smetana
tsmetana@theopportunitytree.org

The Tree Fort is offered in:

Phoenix

3146 E Windsor Ave
Phoenix, AZ 85008

Casa Grande

209 W 1st Street
Casa Grande, AZ 85122

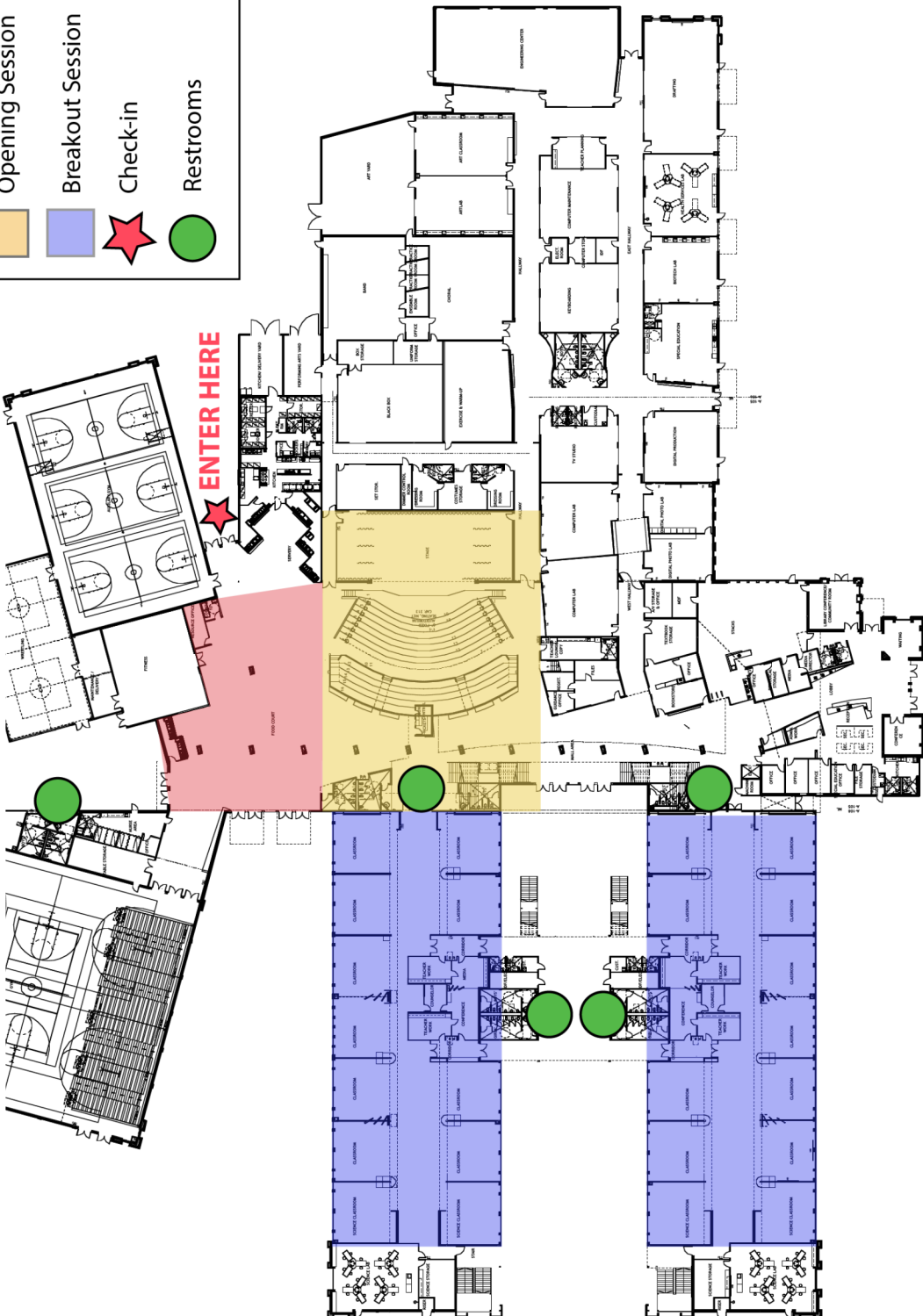
Maricopa

19756 N Maricopa Rd
#108
Maricopa, Arizona 85139

Avondale

328 W Western Ave
Avondale, AZ 85323

Pioneer Drive



Indian School Road



Have an idea?

<https://rebrand.ly/SupSatfeedback>

Do you have a great idea or suggestion to make the Agua Fria Union High School District even better? If so, please visit the link above or scan the QR code below to submit your idea(s). Submissions will be accepted for 2 weeks after the event and will close on Saturday, November 20th. We truly appreciate your input.

Decade of
DREAMS

